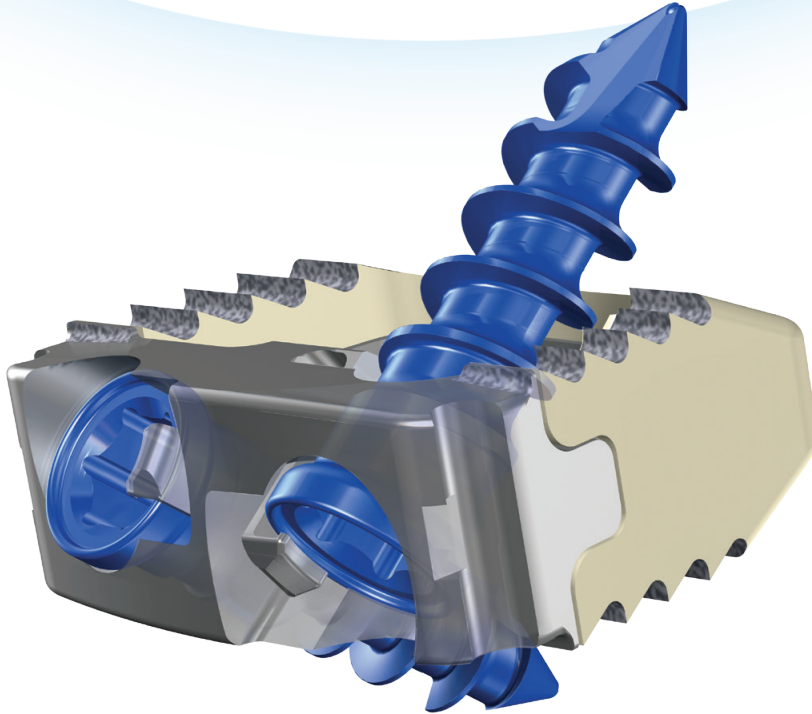



IRIX-C™

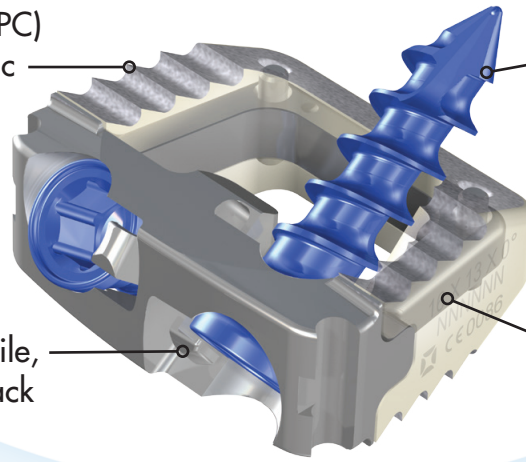
Cervical Integrated Fusion System





- ❑ Integrated titanium ring, surrounded by outer PEEK ring, promotes increased torsional strength and shear performance
- ❑ Resilient locking mechanism, built upon proven cervical fusion technology
- ❑ Frictional titanium plasma coating on bone contact areas




 Titanium Plasma Coated (PC)
PEEK provides fluoroscopic
endplate visualization



 Screw orientation 38°
cephalad/caudal with
up to 6° conical screw
angulation

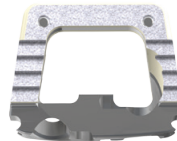
 Locking arm provides tactile,
visual and audible feedback

 Titanium ring provides
better x-ray visibility

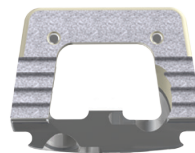
Parallel Implants

Item #	Description
X066-161305P-PC	Irix-C Implant , 16X13 X 0°, 5mm, PC
X066-161306P-PC	Irix-C Implant , 16X13 X 0°, 6mm, PC
X066-161307P-PC	Irix-C Implant , 16X13 X 0°, 7mm, PC
X066-161308P-PC	Irix-C Implant , 16X13 X 0°, 8mm, PC
X066-161309P-PC	Irix-C Implant , 16X13 X 0°, 9mm, PC
X066-161310P-PC	Irix-C Implant , 16X13 X 0°, 10mm, PC
X066-161311P-PC	Irix-C Implant , 16X13 X 0°, 11mm, PC
X066-161312P-PC	Irix-C Implant , 16X13 X 0°, 12mm, PC
X066-181405P-PC	Irix-C Implant , 18X14 X 0°, 5mm, PC
X066-181406P-PC	Irix-C Implant , 18X14 X 0°, 6mm, PC
X066-181407P-PC	Irix-C Implant , 18X14 X 0°, 7mm, PC
X066-181408P-PC	Irix-C Implant , 18X14 X 0°, 8mm, PC
X066-181409P-PC	Irix-C Implant , 18X14 X 0°, 9mm, PC
X066-181410P-PC	Irix-C Implant , 18X14 X 0°, 10mm, PC
X066-181411P-PC	Irix-C Implant , 18X14 X 0°, 11mm, PC
X066-181412P-PC	Irix-C Implant , 18X14 X 0°, 12mm, PC

16 x 13



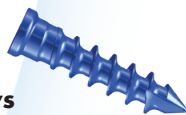
18 x 14



Lordotic Implants

Item #	Description
X066-161305L-PC	Irix-C Implant , 16X13 X 7°, 5mm, PC
X066-161306L-PC	Irix-C Implant , 16X13 X 7°, 6mm, PC
X066-161307L-PC	Irix-C Implant , 16X13 X 7°, 7mm, PC
X066-161308L-PC	Irix-C Implant , 16X13 X 7°, 8mm, PC
X066-161309L-PC	Irix-C Implant , 16X13 X 7°, 9mm, PC
X066-161310L-PC	Irix-C Implant , 16X13 X 7°, 10mm, PC
X066-161311L-PC	Irix-C Implant , 16X13 X 7°, 11mm, PC
X066-161312L-PC	Irix-C Implant , 16X13 X 7°, 12mm, PC
X066-181405L-PC	Irix-C Implant , 18X14 X 7°, 5mm, PC
X066-181406L-PC	Irix-C Implant , 18X14 X 7°, 6mm, PC
X066-181407L-PC	Irix-C Implant , 18X14 X 7°, 7mm, PC
X066-181408L-PC	Irix-C Implant , 18X14 X 7°, 8mm, PC
X066-181409L-PC	Irix-C Implant , 18X14 X 7°, 9mm, PC
X066-181410L-PC	Irix-C Implant , 18X14 X 7°, 10mm, PC
X066-181411L-PC	Irix-C Implant , 18X14 X 7°, 11mm, PC
X066-181412L-PC	Irix-C Implant , 18X14 X 7°, 12mm, PC

Self-Drilling Screws



Item #	Description
X066-3512SD	3.5 X 12mm, Self-Drilling Screw
X066-3514SD	3.5 X 14mm, Self-Drilling Screw
X066-3516SD	3.5 X 16mm, Self-Drilling Screw
X066-3518SD	3.5 X 18mm, Self-Drilling Screw
X066-3520SD	3.5 X 20mm, Self-Drilling Screw

Self-Tapping Screws



Item #	Description
X066-3512ST	3.5 X 12mm, Self-Tapping Screw
X066-3514ST	3.5 X 14mm, Self-Tapping Screw
X066-3516ST	3.5 X 16mm, Self-Tapping Screw
X066-3518ST	3.5 X 18mm, Self-Tapping Screw
X066-3520ST	3.5 X 20mm, Self-Tapping Screw

Self-Tapping Rescue Screws



Item #	Description
X066-3713	3.7 X 13mm, Self-Tapping Rescue Screw
X066-3715	3.7 X 15mm, Self-Tapping Rescue Screw
X066-3717	3.7 X 17mm, Self-Tapping Rescue Screw
X066-3719	3.7 X 19mm, Self-Tapping Rescue Screw
X066-3721	3.7 X 21mm, Self-Tapping Rescue Screw



X-spine Systems, Inc.

452 Alexandersville Rd., Miamisburg, OH 45342

Phone: 800-903-0640 • Direct: 937-847-8400 • Fax: 937-847-8410

www.x-spine.com

INDICATIONS: See Package Insert for a more complete listing of indications, contraindications, warnings, precautions, and other important information.

LIMITED WARRANTY and DISCLAIMER: X-spine products have a limited warranty against defects and workmanship and materials. Any other express or implied warranties, including warranties of merchantability or fitness, are disclaimed.

WARNING: In the USA, this product has labeling limitations. See package insert for complete information. CAUTION: USA Law restricts these devices to sale by or on the order of a physician.

X-spineSM, the X-spine logo, and Irix-CTM are trademarks or servicemarks of X-spine Systems, Inc.

This product is covered by U.S. Patent No. 8,262,697. Other U.S. and foreign patents are pending. All products are not currently available in all markets.

© 2016 X-spine Systems, Inc., All rights reserved.

F-1000.30 Rev D 2/16

