

Please visit www.x-spine.com
for more information

X-spine Systems, Inc.
452 Alexandersville Rd.
Miamisburg, OH 45342

Phone: 800-903-0640
Direct: 937-847-8400
Fax: 937-847-8410
www.x-spine.com

Sacral Disruption and Degenerative Sacroiliitis

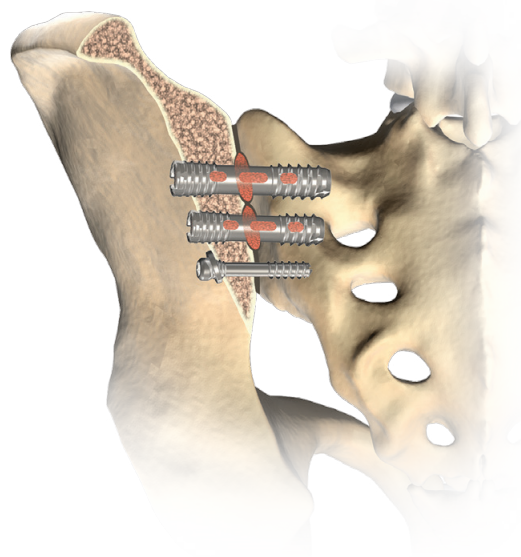
Patient Information

Symptoms of Sacroiliac Joint Pain

- Pain located on one side of the lower back
- Pain radiating into the buttocks, lower back and groin
- Referred pain into the lower limbs (which can be mistaken for sciatica)
- Difficulty turning over in bed, struggling to put on shoes and socks, leg pain while getting in and out of car
- Stiffness in the lower back when getting up after sitting for long periods and when getting up from bed
- Aching on one side of lower back when driving long distances

About the Surgery

The Silex[®] Sacroiliac Joint Fusion system allows for fusion and stabilization of the SI Joint in eligible patients where appropriate non-surgical treatment has failed. Stabilization of the SI Joint may provide immediate relief of your symptoms. The Silex[®] surgery may be performed in a less invasive way than traditional Sacroiliac Fusions, allowing for less blood loss and potential quicker recovery time. The Silex[®] system is intended for sacroiliac joint fusion for conditions including Degenerative Sacroiliitis and Sacroiliac Joint Disruptions.



SILEX[®]
Sacroiliac Joint
Fusion System

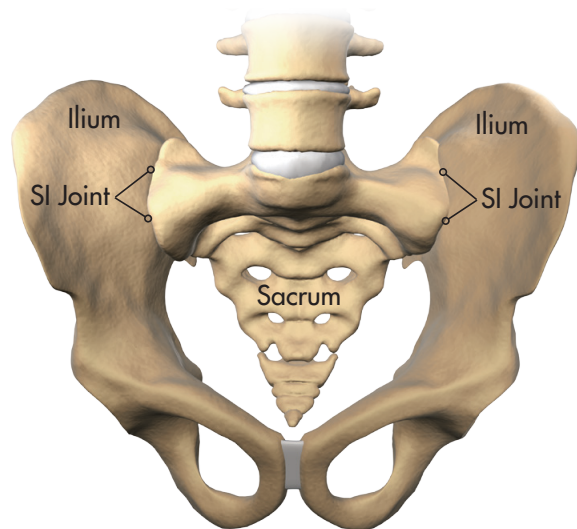
 X-spineSM

Sacral Disruption and Degenerative Sacroiliitis

Patient Information

About the Sacroiliac Joint

The Sacroiliac (SI) Joint is located in the lower portion of the body, between the Sacrum and the Pelvis. The Sacroiliac Joint is designed to act as a shock absorber for the upper extremities. This joint, like any other joint, may become injured or degenerative over time. If these changes should occur, they may cause SI Joint pain.



Sacroiliac Joint Pain

Sacroiliac (SI) Joint pain may be caused by a variety of different factors. Two possible causes of SI Joint pain are Degenerative Sacroiliitis and Sacral Disruption. These may be caused through atraumatic (degenerative changes over time) or traumatic (lift, fall, automobile accident) occurrences.

Potential Causes of SI Joint Pain

- Degenerative sacroiliitis
- Sacral disruption
- Ankylosing spondylitis
- Post-traumatic SI Joint disruption
- Leg length discrepancy
- Structural pelvic asymmetry
- Tumor (pituitary or metastatic)
- Infection
- Inflammation
- Degenerative osteoarthritis
- Ligamentous laxity (Pregnancy)
- Trauma
- Adjacent segment disease

Diagnosis and Treatment Options for Sacral Disruption and Degenerative Sacroiliitis

Sacroiliac Joint pain can potentially be difficult to diagnose as it may mimic disc or low back pain. However, there are a variety of tests that need to be completed to confirm that the SI Joint is indeed the pain generator.

A heavily preferred diagnostic tool used to identify whether the SI Joint is the cause of your low back symptoms is an SI Joint injection with a local anesthetic. If your pain decreases after this diagnostic injection, your surgeon may determine that the SI Joint is the pain generator.



WARNING: In the USA, this product has labeling limitations. See package insert for complete information.

CAUTION: USA Law restricts these devices to sale by or on the order of a physician.

X-spineSM, the X-spine logoSM, the SILEX logo[®], and SILEX[®] mark are all trademarks or service marks of X-spine Systems, Inc. Patent Pending.

Other U.S. and foreign patents are pending. All products are not currently available in all markets. © 2015 X-spine Systems, Inc., All rights reserved.

DISCLAIMER: Information in this brochure is intended to be general and does not represent medical advice or recommendations. The evaluation and examination of the patient by a physician is necessary. Care was taken to ensure the information contained herein is accurate; however, X-spine does not assume any liability for the accuracy and/or completeness of the information, and X-spine is not liable for any losses of any kind that may be caused by the use of or reliance thereon.