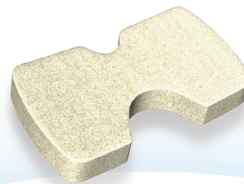
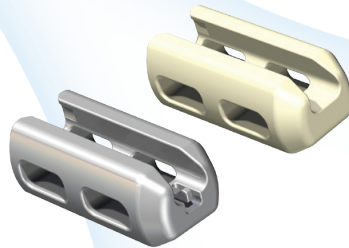


- ❑ Modular Design
- ❑ Titanium or PEEK Insert
- ❑ H-GRAFT® Allograft
- ❑ Minimal Tissue Disruption
- ❑ Integrates Bone Graft

 X-spine<sup>SM</sup>  
*X-treme Innovations*





H-shaped cortical allograft block available in 2mm increments from 8mm to 20mm.

### Cross Bar Plates

Description
Cross Bar Plate, 28mm
Cross Bar Plate, 32mm
Cross Bar Plate, 36mm
Cross Bar Plate, 40mm
Cross Bar Plate, 55mm

### Inserts

Description	Description
Insert, Titanium, 8mm	Insert, PEEK, 8mm
Insert, Titanium, 10mm	Insert, PEEK, 10mm
Insert, Titanium, 12mm	Insert, PEEK, 12mm
Insert, Titanium, 14mm	Insert, PEEK, 14mm
Insert, Titanium, 16mm	Insert, PEEK, 16mm
Insert, Titanium, 18mm	Insert, PEEK, 18mm

### Locking Plates

Description	Description
Locking Plate, 28mm, 8mm	Locking Plate, 36mm, 16mm
Locking Plate, 28mm, No Insert	Locking Plate, 36mm, No Insert
Locking Plate, 32mm, 8mm	Locking Plate, 40mm, 8mm
Locking Plate, 32mm, 10mm	Locking Plate, 40mm, 10mm
Locking Plate, 32mm, 12mm	Locking Plate, 40mm, 12mm
Locking Plate, 32mm, No Insert	Locking Plate, 40mm, 14mm
Locking Plate, 36mm, 8mm	Locking Plate, 40mm, 16mm
Locking Plate, 36mm, 10mm	Locking Plate, 40mm, 18mm
Locking Plate, 36mm, 12mm	Locking Plate, 40mm, No Insert
Locking Plate, 36mm, 14mm	Locking Plate, 55mm, No Insert



**X-spine Systems, Inc.**

452 Alexandersville Rd., Miamisburg, OH 45342

Phone: 800-903-0640 • Direct: 937-847-8400 • Fax: 937-847-8410

[www.x-spine.com](http://www.x-spine.com)

**INDICATIONS:** See Package Insert for a more complete listing of indications, contraindications, warnings, precautions, and other important information.

**LIMITED WARRANTY and DISCLAIMER:** X-spine products have a limited warranty against defects and workmanship and materials. Any other express or implied warranties, including warranties of merchantability or fitness, are disclaimed.

**WARNING:** In the USA, this product has labeling limitations. See package insert for complete information. **CAUTION:** USA Law restricts these devices to sale by or on the order of a physician.

X-spine<sup>SM</sup>, the X-spine logo, the AXLE logo<sup>®</sup>, and AXLE<sup>®</sup> mark are all trademarks or service marks of X-spine Systems, Inc.

This product is covered by U.S. Patent No. 8,262,697. Other U.S. and foreign patents are pending. All products are not currently available in all markets.

© 2014 X-spine Systems, Inc., All rights reserved.

CE 0086

F-1000.11 Rev D 10/14

